

Description

PT-305 S Planner Thicknesser

Date

03-04-19

Dear customer.

Please note: there have been some changes in the machine and current manual supplied has not been updated yet. Please read the below information on the setting and use of your machine in conjunction with the existing factory manual. Thank you

Please note: the 2 mm thickening capacity is only up to approximately 140 mm wide . Fullwidth, maximum cut that should be taken is approximately 1 mm.

Page 19. OVERHEAD CUTTER GUARD MOUNTING ARM

Please note when assembling the cutter guard swivel bracket. After refitting through the bracket assembly, all Screw the 110 mm long threaded knob all the way through the existing threaded hole in the outfeed table, then fit the locknut

Do not screw the locknut all the way up, but just enough so the bolt end sticks out 2 or 3 mm.

For safety. This allows the knob to be undone and the guard to be swivelled up out of the way and then lock back in place to lift table. Without removing the cutter guard off the machine making it unsafe if not refitted.

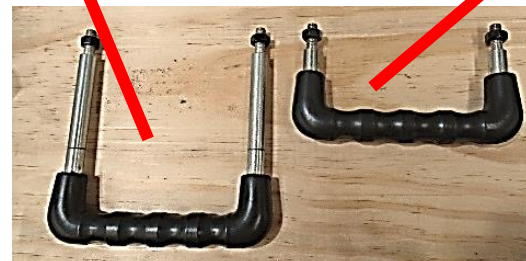


Please note there are 2 handles supplied to assist in the lifting and lowering of the in feed and outfeed table when setting up between planner and thicknesser mode.

Please note the large handle goes on the left-hand side on the outfeed table under the cutter guard swivel bracket.

The small handle goes on the right hand on the infeed table

Please also note the tables are very heavy never get your hand underneath tables on lowering the tables.



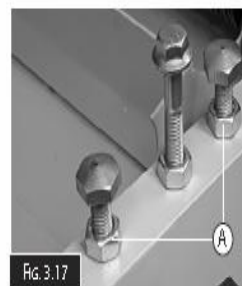
Please note. as described in the current manual supplied the adjustment of the table for setting the knife states to unlock and adjust the 2 positioning studs.. These do not get adjusted and are only for adjusting the table/s parallel to the spindle blades on resetting of the spindle.

Adjusting these screws should only be done by a trained technician as this can affect flatness and twist of the tables if adjusted incorrectly. Future manuals will be revised.

If adjustment is needed, refer to the instructions below using a small straightedge

4. Raise or lower the outfeed table until the knife just touches the straightedge.
5. Unlock the outfeed table locking handle and raise the table up. With the table out of the way adjust the two positioning studs. ("A" in Fig.3.17)

NOTE: Remember to make small adjustments to the studs so you don't over correct.



Description

PT-305 S Planner Thicknesser

Date

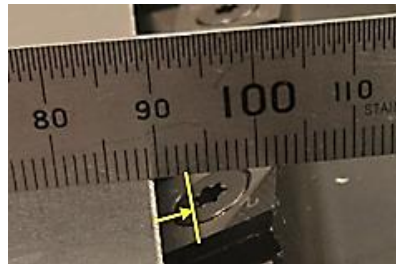
03-04-19

Ensure machine is not plugged in before checking the below and doing adjustments if needed.

With machine positioned where it will be used if possible. Open and close the "outfeed" table. Locking it in place. Open the in-feed table and leave up out of the way. If already fitted, remove the black plastic guard off the front side of machine that covers the spindle end, this will allow you to easily turn the spindle by hand using the nut on the end of the spindle.

With a steel straightedge (A small steel ruler is good) Sit straight edge on the middle of the table as shown above one of the blades. Pressing down lightly on the straightedge carefully turn the spindle by hand noting how far it lifts up the straightedge and pulls it along before it stops moving it.

A good amount is 2mm to 4 mm this means cutter is approximately 0.1mm above the table.



If it needs adjusting. (out feed table)

The top position Stop Nut on the table depth screw will need repositioning. Please note to ensure table remains flat on every adjustment ensure on every adjustment that the table lock lever is underdone. And after adjustment before rechecking it is locked back up. Undo table lock lever.

Back off the table by turning the hand wheel anticlockwise.

NB: on initial use a 16 mm Spanner might also be needed on the nut to help turn the hand wheel. To adjust table position. Undo the grub screw on the side of the position stop nut and rotate the nut on the thread as needed.

Rotating it anticlockwise (down the thread) will mean the table will go up further. (Move straightedge less)

Rotating clockwise (up the thread) will mean the table will be lower (move straightedge more)

After each adjustment, tightened the grub screw, wind the table up and down to the top stop a couple of times leaving all the way up and then lock the table lock lever on the front of the machine.

Retest blades with the straightedge on the table again and adjust if needed until the required 2 to 4mm movement is achieved...

Remember to refit the black plastic guard that covers the spindle end back onto the front of the machine



When this is set, the **Infeed table** must be checked to ensure its top stop aligns the infeed table with the outfeed table.

(Although not as critical as above Both tables must be the same height)

Description

PT-305 S Planner Thicknesser

Date

03-04-19

With the outfeed table now set all the way up on its adjustment and locked down. Carefully Drop down the infeed table and wind its height adjustment hand wheel down a few turns and then all the way up to it stop. Now lock the infeed table lock lever.

With a steel straightedge, holding it down on the outfeed table, slide the straightedge from the outfeed table over the cutter head (not touching the blade) to the infeed table.

The edge of the rule should not foul on the opposite table if it does then the infeed table needs adjusting down.

If the rule is above the infeed table, then the infeed table needs adjusting up.

The adjusting and setting of the infeed table is identical to the adjustment and setting of the outfeed table as described in previous instructions above. Except do not use a cutter head but the opposing table as a setting device

Adjust the table stop until both tables are parallel with each other and the steel rule will slide from one table to the other without interference or rocking down to meet the other table.

